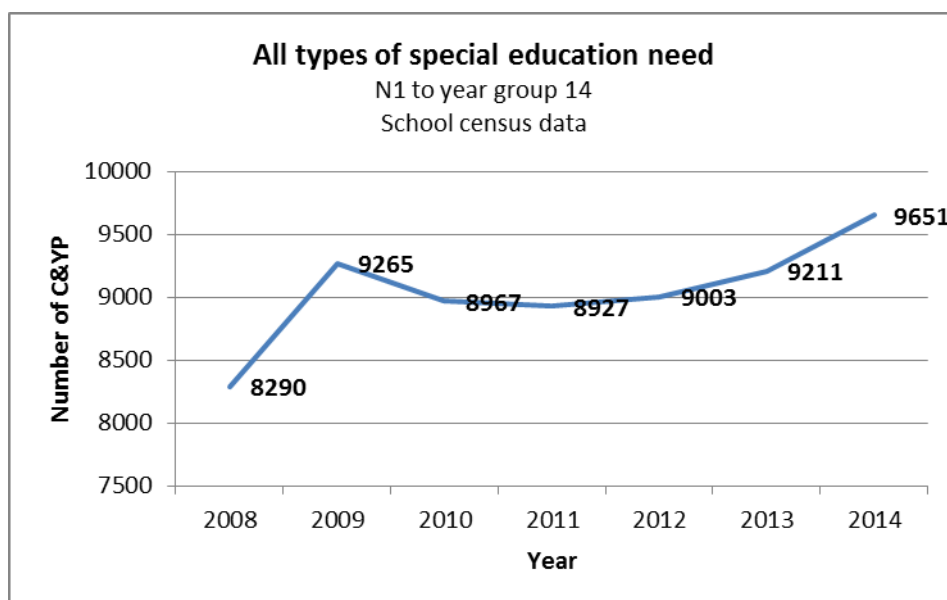
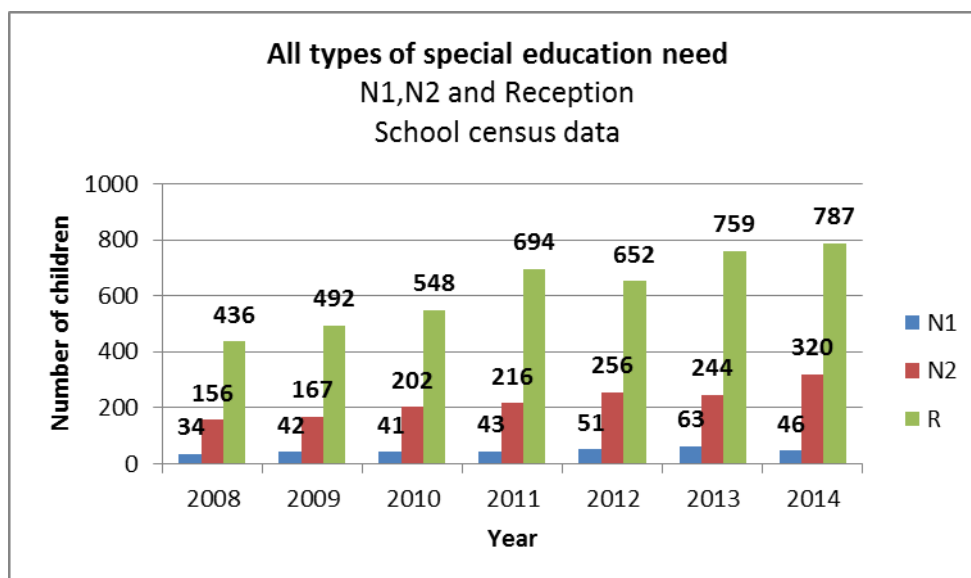


### Children and Young people with SEND - Demographic Information

The graph below shows the total growth in number of children and young people experiencing SEND in Leeds since 2008.



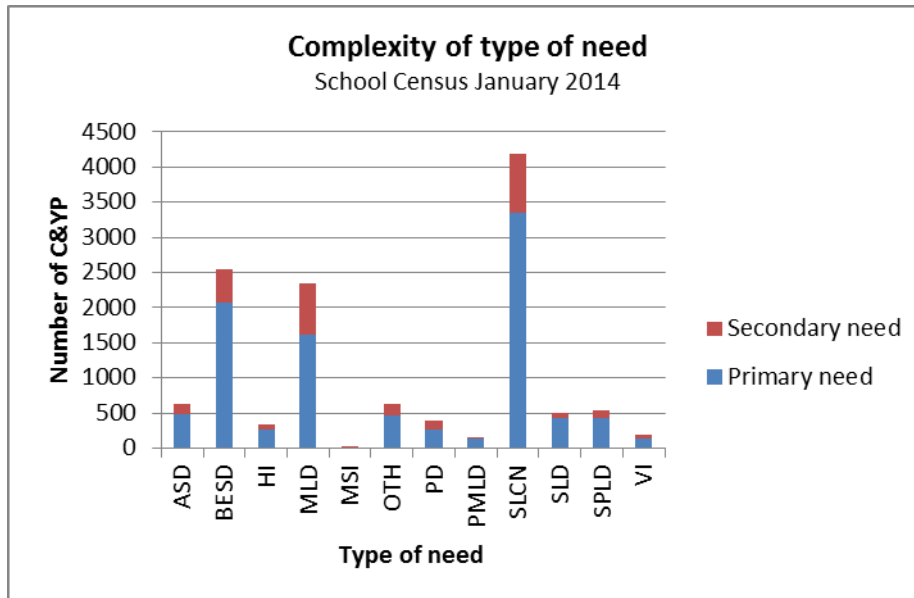
The graph below shows the total growth in the number of young children experiencing SEND in Leeds since 2008.



	N1	N2	R	Total
2008	34	156	436	626
2009	42	167	492	701
2010	41	202	548	791
2011	43	216	694	953
2012	51	256	652	959

2013	63	244	759	1066
2014	46	320	787	1153

The graph below shows the prevalence of secondary needs for children and young people who experience SEND. Source: January School Census 2014 N1 to Y14.



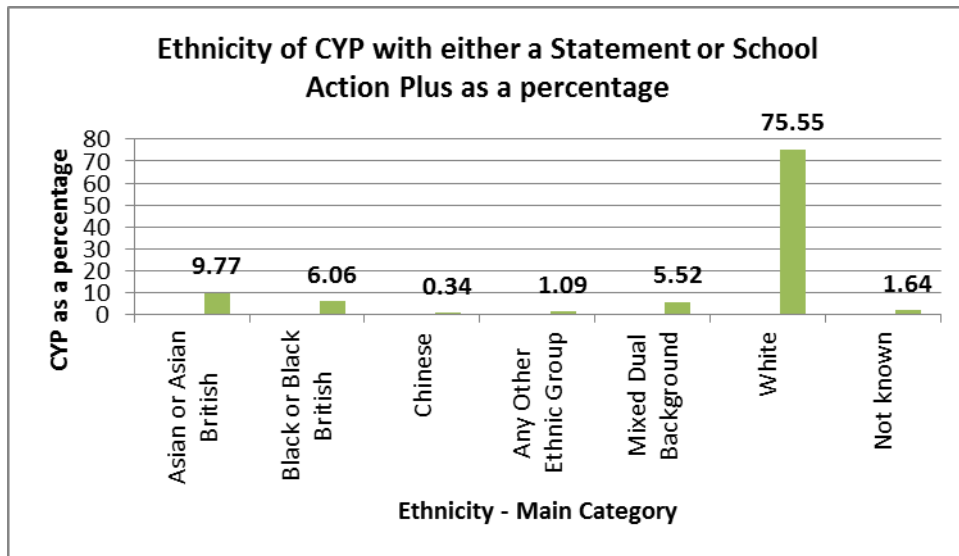
Type of need	Primary	Secondary	Total
ASD - Autism spectrum disorder	487	142	629
BESD – Behaviour , emotional, social disorder (superseded by SEMH – social, emotional and mental health in 2015)	2079	464	2543
HI – Hearing impairment	270	60	330
MLD – Mild learning difficulty	1609	744	2353
MSI – Multi-sensory impairment	11	6	17
OTH – Other need	459	166	625
PD – Physical disability	271	115	386
PMLD – Profound and multiple learning difficulties	133	10	143
SLCN – Speech, language and communication needs	3347	847	4194
SLD – Severe learning difficulties	431	69	500
SPLD – Specific learning difficulties	422	125	547
VI – Visual impairment	131	55	186
<b>Total</b>	<b>9650</b>	<b>2803</b>	<b>12453</b>

### Gender

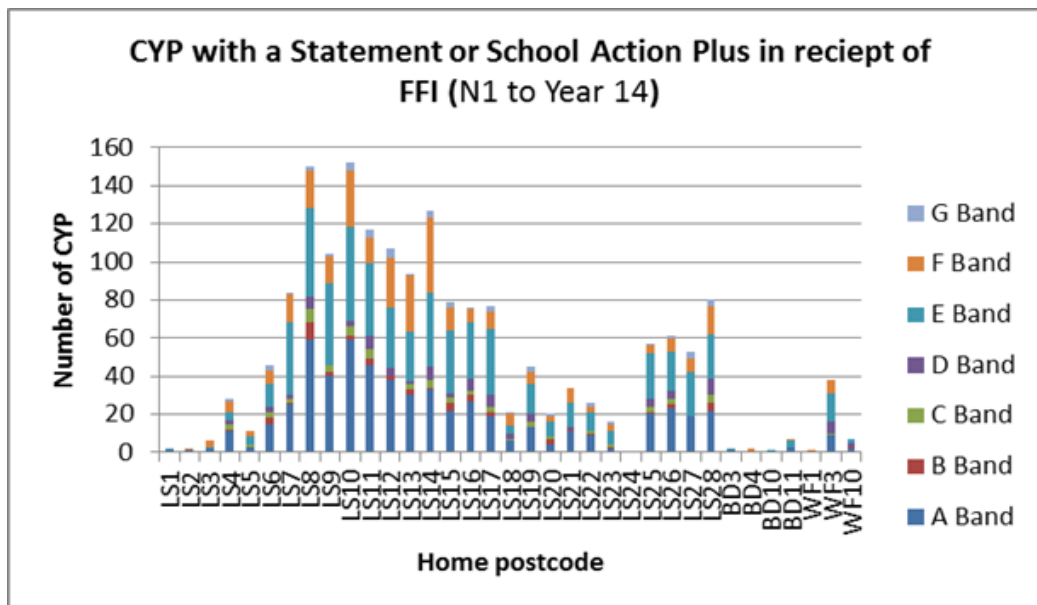
Classification	Male	Female	Total
School Action Plus and Statement combined	6599	3051	9650
School Action Plus	5179	2522	7701
Statement	1420	529	1949

Source : January School Census 2014 N1 to Y14

The graph below shows the ethnicity of children and young people with SEND. Source: January School Census 2014.

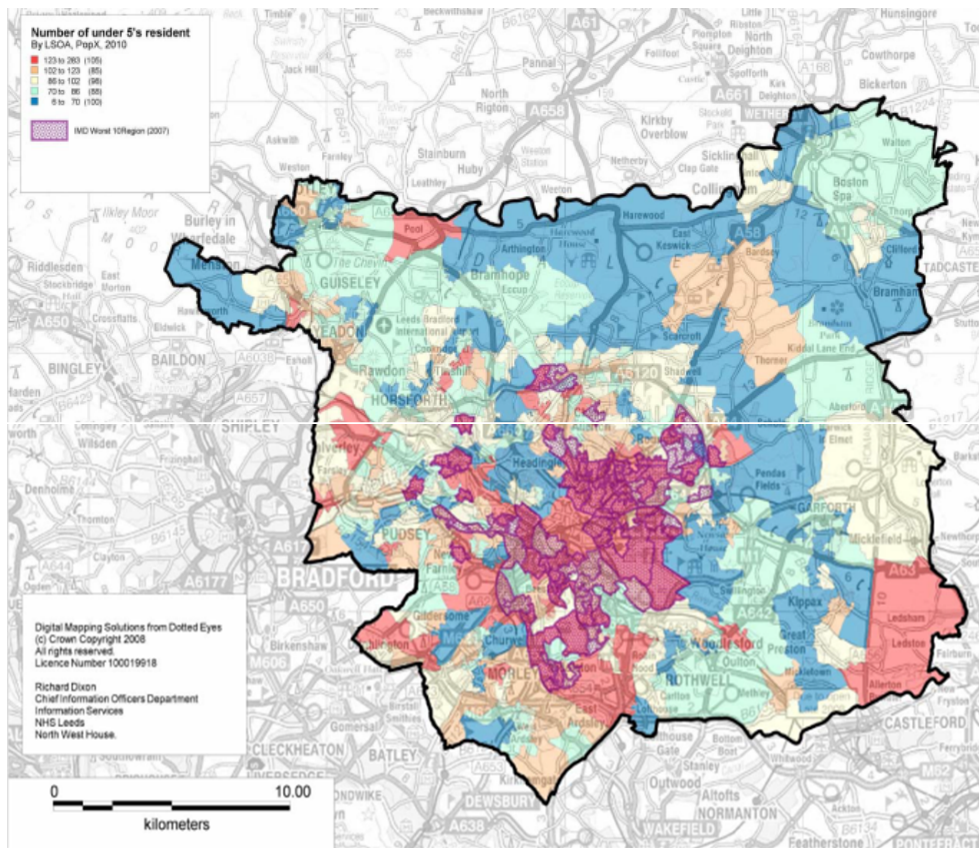


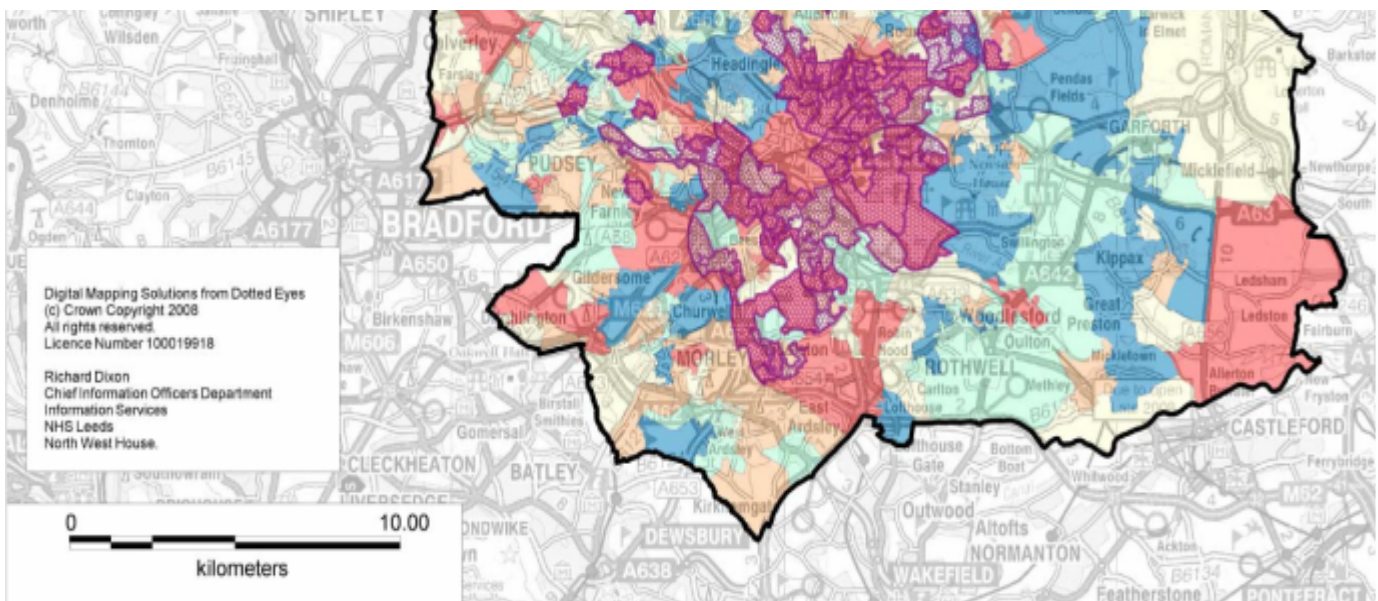
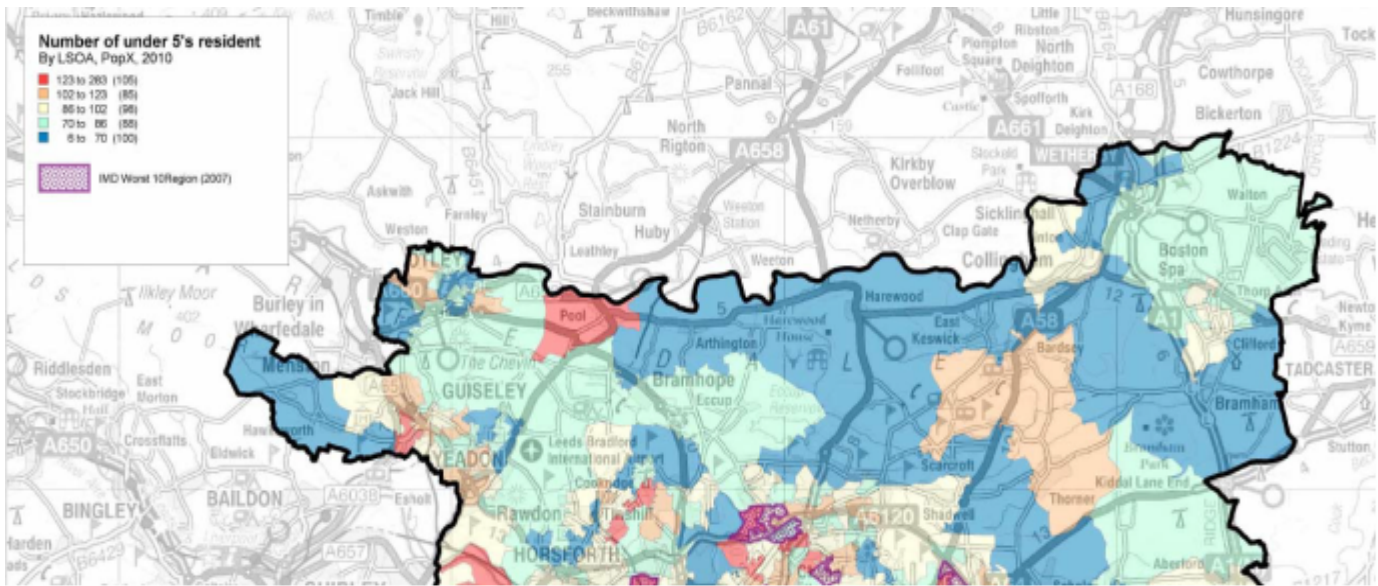
The graph below shows where children and young with SEND live in the city by primary type of need.

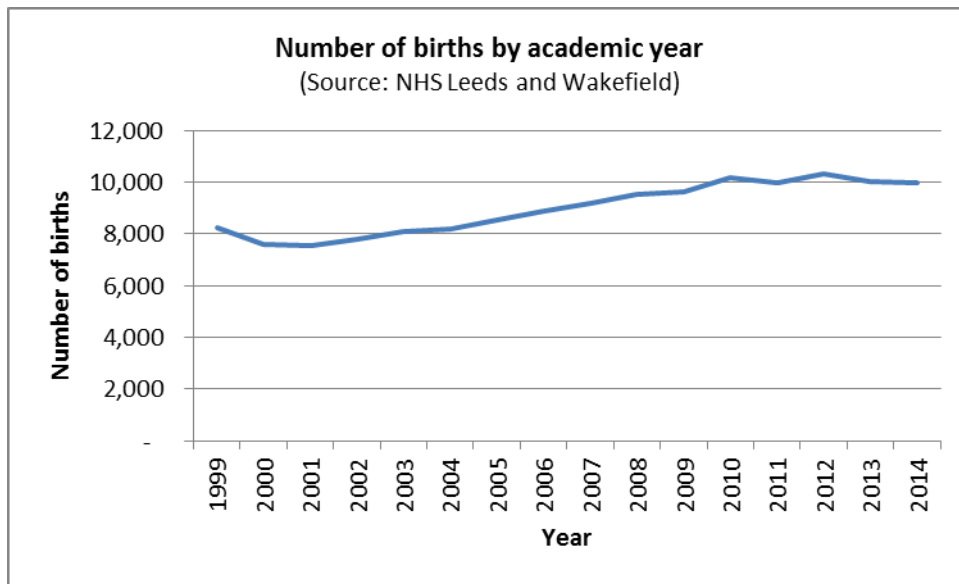


FFI Banding	Type of need
A	Cognitive / Learning
B	Visual
C	Hearing
D	Physical Disability
E	Communication and Interaction
F	Behaviour
G	Medical Needs

The map below demonstrates the increased density and population of children under age five in specific areas of Leeds.







**Number of births by academic year as supplied by NHS Health Leeds & Wakefield**

**Note: 2014 should be read as 1st Sep 2013 - 31st August 2014 etc**

Year	Number of births
1999	8,227
2000	7,620
2001	7,562
2002	7,784
2003	8,094
2004	8,192
2005	8,516
2006	8,886
2007	9,175
2008	9,550
2009	9,652
2010	10,202
2011	9,996
2012	

	<b>10,350</b>
<b>2013</b>	<b>10,051</b>
<b>2014</b>	<b>9,962</b>